

Journal of Surgical and Clinical Dentistry

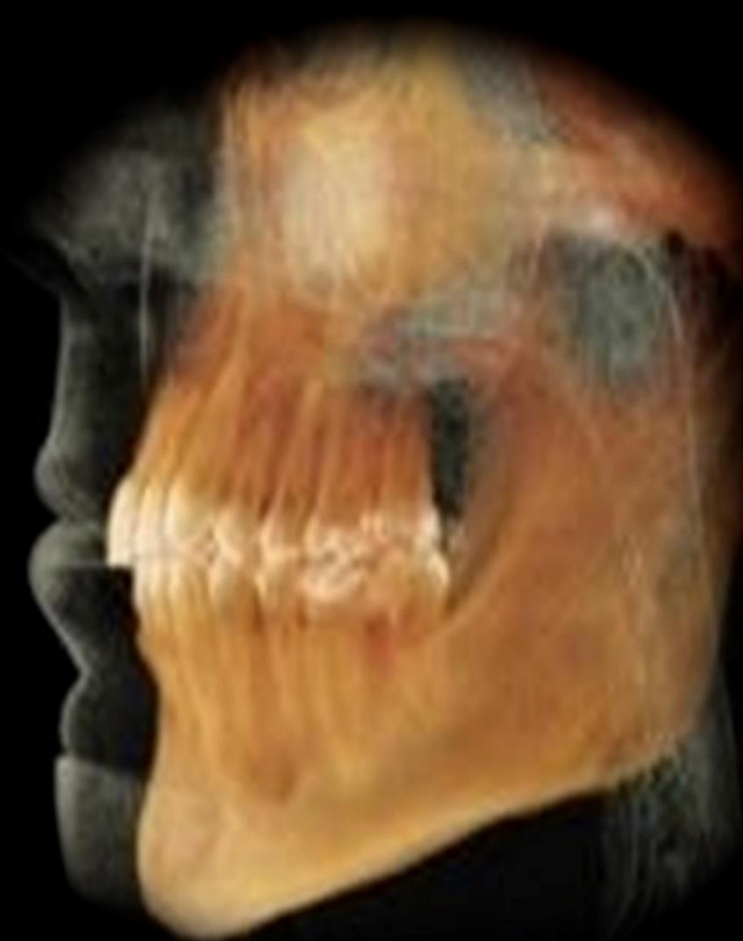
Online ISSN 2358-0356

JSCD

26(1)

April / June

2022



Title: Journal of Surgical and Clinical Dentistry

Short title: J. Surg. Clin. Dent.

Abbreviation: JSCD

Publisher: Master Editora

Periodicity: Quarterly

Indexed: Latindex, Google Scholar, EBSCO host

Start: April, 2014

Editor-in-Chief:

Prof. Dr. Mário dos Anjos Neto Filho [MSc; Dr]

*The Journal of Surgical and Clinical Dentistry - JSCD is an editorial product of the **Master Publisher** aimed at disseminating scientific articles only in electronic media, indexed in Latindex, Google Scholar and EBSCO host database.*

*All articles published were formally authorized by the authors and are your sole responsibility. The opinions expressed by the authors of the published articles do not necessarily correspond to the opinions of **Master Publisher**, the **JSCD** and/or its editorial board.*



Master Editora

The Brazilians open access Journals

Dear Researcher,

*We have the great pleasure to entry the twenty-sixth edition, volume one, of the **Journal of Surgical and Clinical Dentistry - JSCD**.*

*The **Master Publisher** and the **JSCD** are very grateful to the authors of the articles that brighten this edition of the invaluable collaboration, by immediately accepted our invitation and for the trust placed in this project.*

*The **JSCD** is one of the early open access Journal in Brazil, representing the materialization of the lofty ideals of **Master Publisher** about the broad and unrestricted dissemination of scientific knowledge produced by the Health Sciences.*

*Authors of scientific articles that are interested in the scope of **JSCD**, send your manuscripts for consideration of our editorial board!*

Our twenty-seventh edition will be available in July, 2022!

Happy reading!

Mário dos Anjos Neto Filho
Editor-in-Chief JSCD

EPIDEMIOLOGY OF MAXILLOFACIAL TRAUMA IN A BRAZILIAN EMERGENCY HOSPITAL: A RETROSPECTIVE STUDY

MARCIO TADASHI **TINO**, BRUNO SOUSA PINTO **FERREIRA**, ARIADINA RIBEIRO DE **OLIVEIRA**, LAIS DE OLIVEIRA **MELO**, PATRÍCIA CORRÊA DE **FARIA**, GILBERTO FENELON DAS **NEVES**, EUCLIDES BARBOZA DE **OLIVEIRA** 05